



Gallatin City
 Gallatin city, TN (4728540)
 Geography: Place

Summary	2000	2010	2015
Population	23,230	28,677	31,443
Households	8,963	11,237	12,391
Families	6,197	7,654	8,365
Average Household Size	2.50	2.48	2.47
Owner Occupied HUs	5,625	7,277	8,172
Renter Occupied HUs	3,338	3,960	4,219
Median Age	35.5	38.1	39.2

Trends: 2010-2015 Annual Rate	Area	National
Population	1.86%	0.76%
Households	1.97%	0.78%
Families	1.79%	0.64%
Owner HHs	2.35%	0.82%
Median Household Income	2.74%	2.36%

Households by Income	2000		2010		2015	
	Number	Percent	Number	Percent	Number	Percent
< \$15,000	1,818	20.4%	1,695	15.1%	1,670	13.5%
\$15,000 - \$24,999	1,489	16.7%	1,239	11.0%	1,214	9.8%
\$25,000 - \$34,999	1,177	13.2%	1,265	11.3%	1,227	9.9%
\$35,000 - \$49,999	1,458	16.4%	1,843	16.4%	1,802	14.5%
\$50,000 - \$74,999	1,681	18.9%	2,398	21.3%	2,254	18.2%
\$75,000 - \$99,999	715	8.0%	1,468	13.1%	1,940	15.7%
\$100,000 - \$149,999	334	3.7%	866	7.7%	1,647	13.3%
\$150,000 - \$199,000	86	1.0%	222	2.0%	303	2.4%
\$200,000+	156	1.8%	243	2.2%	332	2.7%
Median Household Income	\$34,737		\$45,665		\$52,278	
Average Household Income	\$46,787		\$58,392		\$66,121	
Per Capita Income	\$18,550		\$23,465		\$26,695	

Population by Age	2000		2010		2015	
	Number	Percent	Number	Percent	Number	Percent
0 - 4	1,700	7.3%	2,014	7.0%	2,107	6.7%
5 - 9	1,566	6.7%	2,014	7.0%	2,168	6.9%
10 - 14	1,615	7.0%	1,980	6.9%	2,254	7.2%
15 - 19	1,685	7.3%	1,786	6.2%	2,035	6.5%
20 - 24	1,515	6.5%	1,568	5.5%	1,656	5.3%
25 - 34	3,370	14.5%	3,685	12.8%	3,685	11.7%
35 - 44	3,510	15.1%	4,044	14.1%	4,390	14.0%
45 - 54	2,978	12.8%	4,195	14.6%	4,324	13.8%
55 - 64	2,113	9.1%	3,421	11.9%	4,055	12.9%
65 - 74	1,555	6.7%	2,076	7.2%	2,734	8.7%
75 - 84	1,128	4.9%	1,273	4.4%	1,382	4.4%
85+	495	2.1%	622	2.2%	653	2.1%

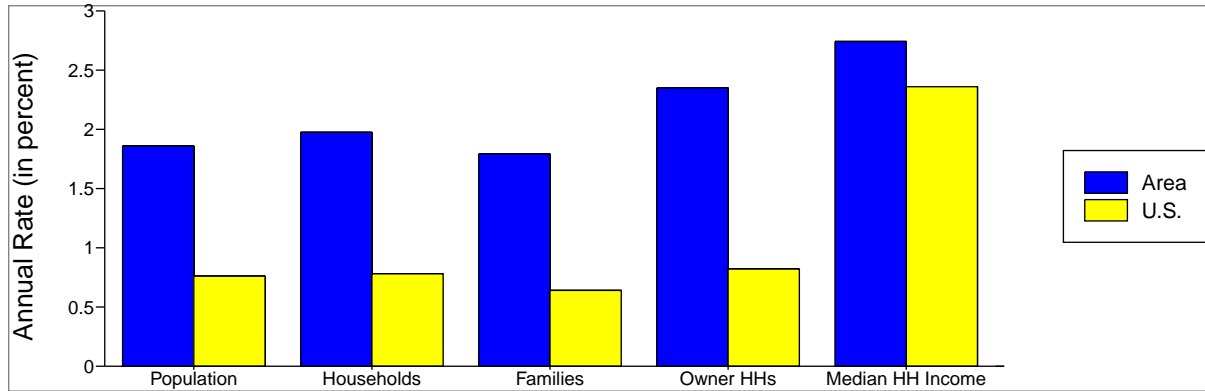
Race and Ethnicity	2000		2010		2015	
	Number	Percent	Number	Percent	Number	Percent
White Alone	18,189	78.3%	21,925	76.5%	23,964	76.2%
Black Alone	4,081	17.6%	4,952	17.3%	5,417	17.2%
American Indian Alone	70	0.3%	93	0.3%	99	0.3%
Asian Alone	98	0.4%	172	0.6%	206	0.7%
Pacific Islander Alone	16	0.1%	17	0.1%	17	0.1%
Some Other Race Alone	469	2.0%	1,020	3.6%	1,168	3.7%
Two or More Races	307	1.3%	498	1.7%	572	1.8%
Hispanic Origin (Any Race)	801	3.4%	1,860	6.5%	2,251	7.2%

Data Note: Income is expressed in current dollars.

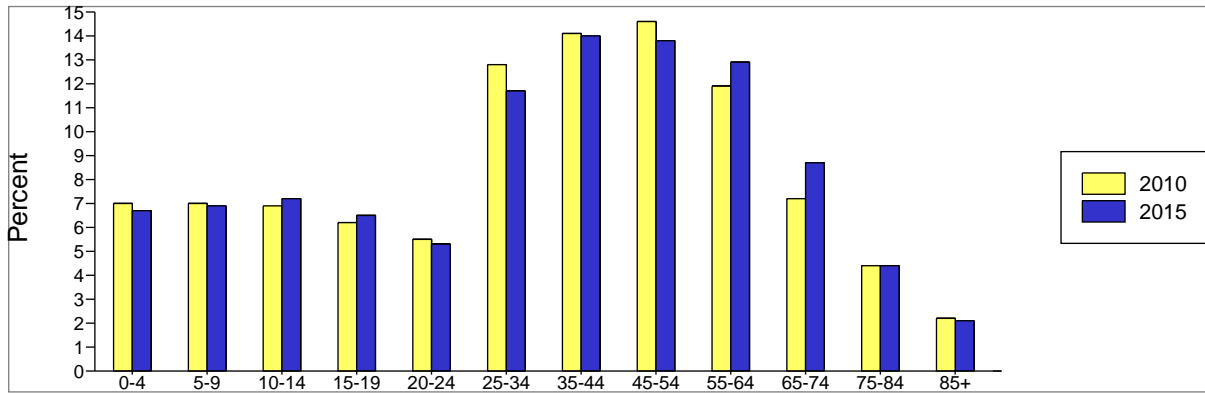
Source: U.S. Bureau of the Census, 2000 Census of Population and Housing. ESRI forecasts for 2010 and 2015.

Gallatin City
 Gallatin city, TN (4728540)
 Geography: Place

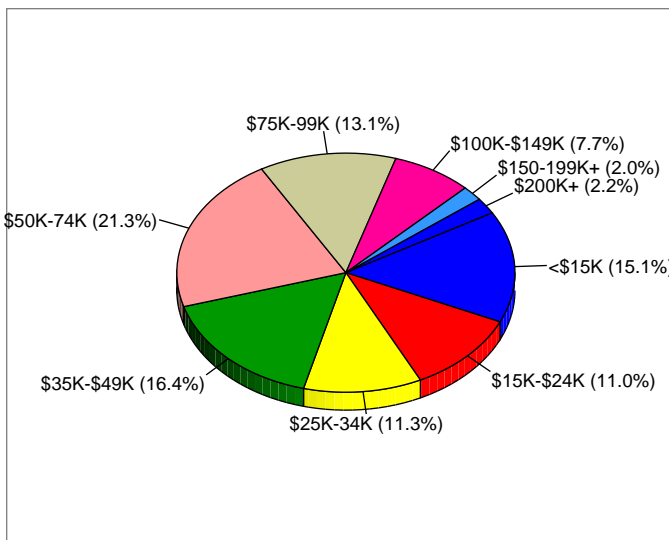
Trends 2010-2015



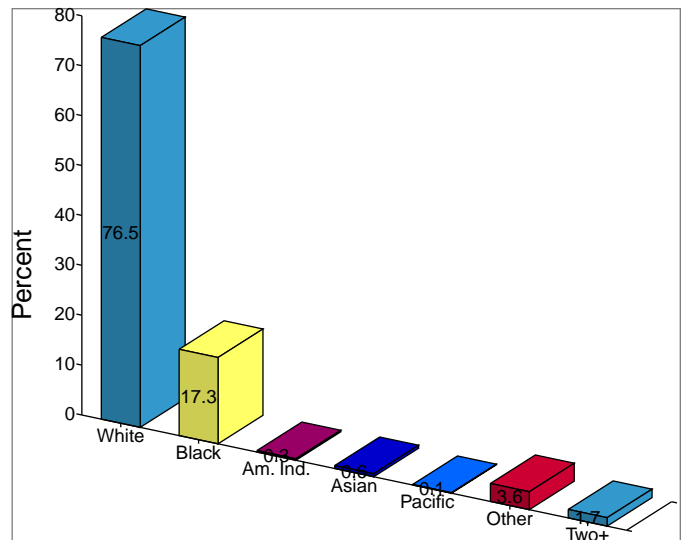
Population by Age



2010 Household Income



2010 Population by Race



2010 Percent Hispanic Origin: 6.5%